



iPad Cozy

Skill Level: Beginner

Designed By
Kelley Gilbert

www.casaturtle.com



Most people have a tablet or e-reader that they keep with them or want to keep protected. Using laminated cottons and two Legacy stabilizers, this cozy is durable and water repellent. Dimensions listed are for the iPad. The pattern can be customized for any e-reader.

Fabrics Needed

Cotton fabric	1 fat quarter
Lining	1 fat quarter
Suede for flap	1 fat quarter

Materials Needed

Legacy L-71F Fuse-N-Shape® 1-Sided Fusible	50cm
Legacy L-987 Fusible Fleece White	50cm
Legacy L-100 Gloss Vinyl Fuse™	50cm
Velcro®	Two small pieces
Thread	
Leather or jeans needle	
Soft sided mallet (optional)	

Tools Needed

Sewing machine and related supplies
Rotary cutter and related supplies

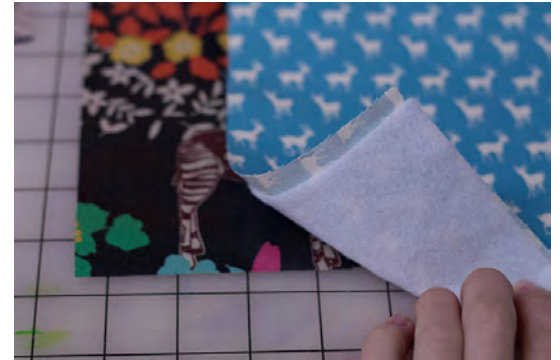
<http://www.createwithlegacy.com>

Graphic Artist Alexandra Henry
PERMISSION IS GIVEN TO REPRODUCE FOR PERSONAL USE ONLY

Assembly

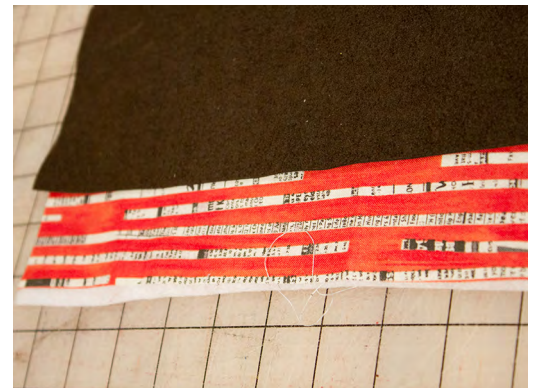
Step 1. Cut one 11½" x 18½" rectangle each cotton fabric and lining. Cut two 11½" x 5½" rectangles for flap. Cut one 10" x 18" rectangle Fusible N-Shape®. Cut one 11½" x 18" rectangle each of Fusible Fleece and Gloss Vinyl Fuse™.

Step 1. Fuse the rectangle of Fusible Fleece White to the wrong side of the lining rectangle following manufacturer's instructions.

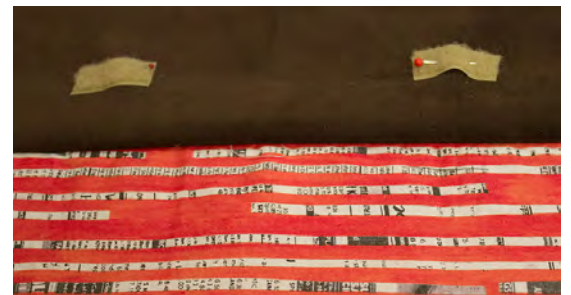


Step 2. Fuse the rectangle of Gloss Vinyl Fuse to the right side of the exterior cotton rectangle, following manufacturer's instructions.

Step 3. Place one 11½" side of the suede rectangle to one 11½" side of the laminate rectangle with right sides together. Stitch using a ¼" seam allowance. Repeat this step with the lining rectangle and the remaining suede rectangle.



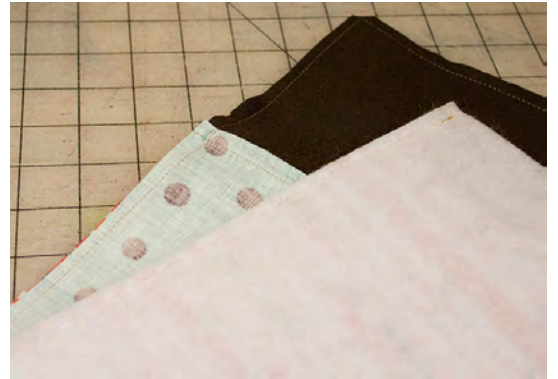
Step 4. Place the 'soft' portions of the Velcro® on the right side of the suede that is stitched to the lining. Place them 2" from the center point on both sides, and 2" from the sewn edge, on the interior pieces of suede.



Step 5. Repeat Step 4 with the laminated fabric end of the laminated fabric and suede piece and the rough side of the Velcro®. The two opposing pieces of the Velcro® should be aligned.



Step 6. Place the lining and the exterior right sides together. Stitch, the two long sides and the suede short side. Clip edges and turn right side out. Push out the corners.



Step 7. Insert the rectangle of Fuse-N-Shape®.



Step 8. Adhere the Fuse-N-Shape® to the interior pieces by ironing with a pressing cloth following manufacturer's instructions.

Step 9. Turn under the open end and press following manufacturer's instructions. This may require trimming the Fuse-N-Shape® by ¼". Secure with binding clips or clothespins. Topstitch the open end.



Step 10. Topstitch close to the edge at the meeting of the suede and laminate.



Step 11. Fold the long rectangle in half, leaving the suede exposed as a flap. Topstitch the edges together. Continue topstitching over the suede.

HINT: Use a soft sided mallet on a hard surface or finger press well. This will aid in topstitching through the many layers.

